

# WATERLEA COLLECTION

HUNTS WHARF



ONE, TWO & THREE BEDROOM  
WATERSIDE APARTMENTS  
FOR SHARED OWNERSHIP IN  
CLAPTON, EAST LONDON.

# CONTEMPORARY WATERSIDE LIVING

The Waterlea Collection brings four high quality apartments to a popular riverside location in east London, available to buy with shared ownership through North London Muslim Housing Association.

Located at the contemporary Hunts Wharf development, an 11 minute walk to Clapton station, your new one, two or three bedroom home at the Waterlea Collection is in the midst of east London's favourite villages and hotspots.

Well known for great schools surrounded by a variety of green spaces, the Waterlea Collection apartments are spacious and perfect for families. The River Lea runs beside Hunts Wharf and Walthamstow Marshes can be seen across the river with plenty of local parks nearby. Local schools include Ofsted rated 'Good'

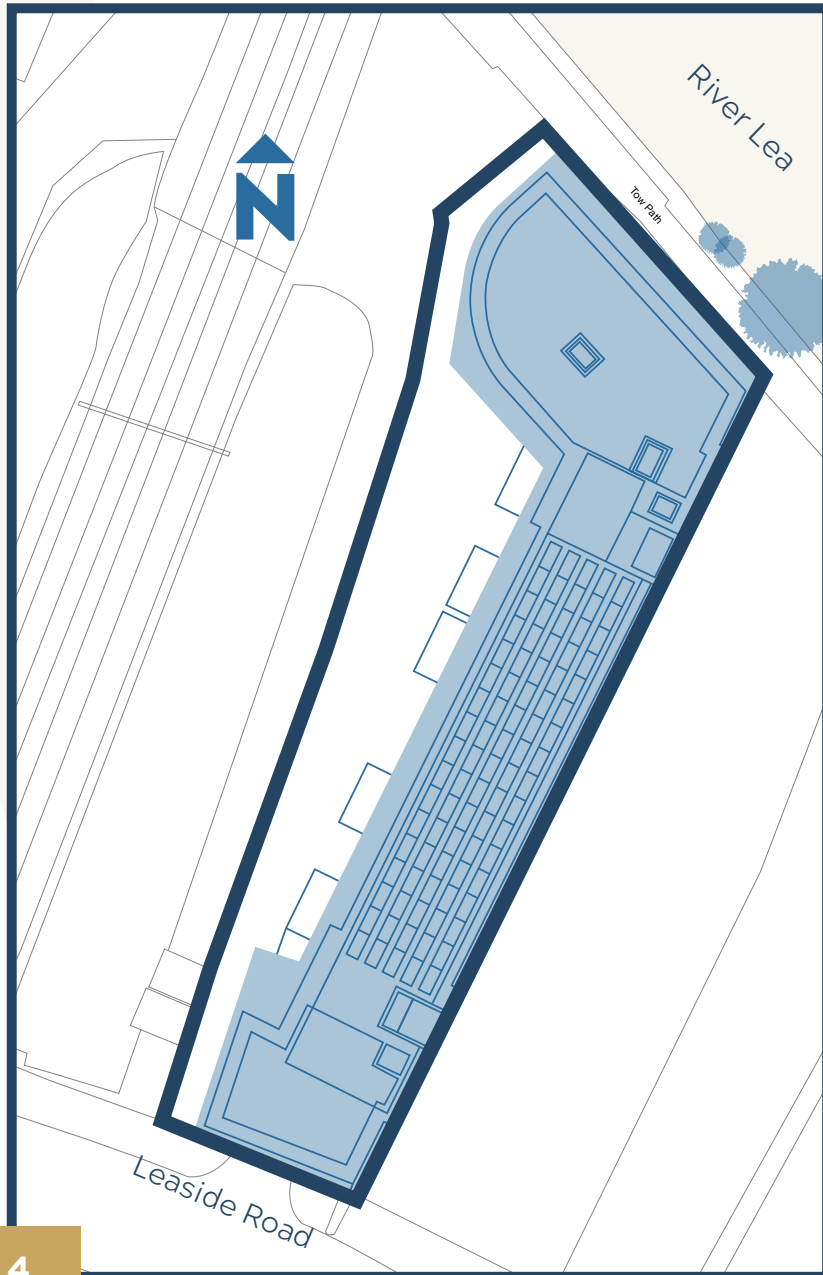
school Millfields Community School, and 'Outstanding' schools Clapton Girls' Academy and Jubilee Primary School.

South of Clapton, walk along Chatsworth Road with it's independent coffee shops like Millfields Coffee for a local caffeine fix, a deli, restaurants and 1910's The Castle Cinema. Relax at the cinema's stylish bar, or head to Hackney's Mare Street where you'll find everyday amenities including supermarkets, cafes, a post office as well as nightlife including the community focussed theatre, Hackney Empire.

Clapton itself has a quiet, relaxed atmosphere but good connections aren't sacrificed here, with Liverpool Street station a 13 minute train journey from Clapton station.



# SITE PLAN



# SPECIFICATION

## Kitchen

---

- › Fitted white kitchen with timber worktops
- › Tiled splashback to hob
- › 1.5 stainless steel sink with chrome mixer taps
- › Integrated appliances:
  - ›› Electric oven
  - ›› Induction hob and extractor fan hood
  - ›› Fridge/freezer
  - ›› Washing machine
  - ›› Slimline dishwasher
- › Under cabinet light fittings

## Bathroom & Cloakroom

---

- › White sanitaryware
- › Chrome Thermostatic mono basin mixer tap and shower
- › Chrome towel rail
- › Mirror
- › Bath with glass shower screen to bathrooms
- › Shower with glass shower screen to showers (Plot 104 only)

## General

---

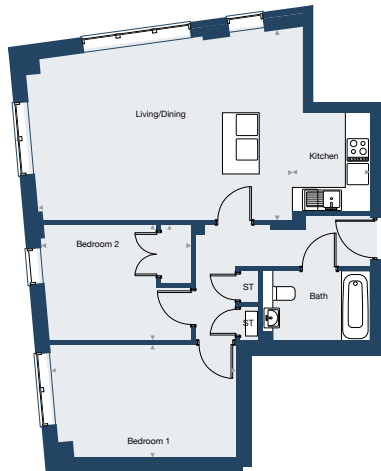
- › Durable engineered wood flooring to open plan living areas and hallways
- › Ceramic tiled floors and walls to bathroom
- › Woodwork and walls in white
- › Recessed LED downlights throughout, except energy saving pendant light fittings to second and third bedrooms
- › White switches and sockets throughout



# PLOT 101



Total Internal Area 68.9 m<sup>2</sup>



# PLOT 202



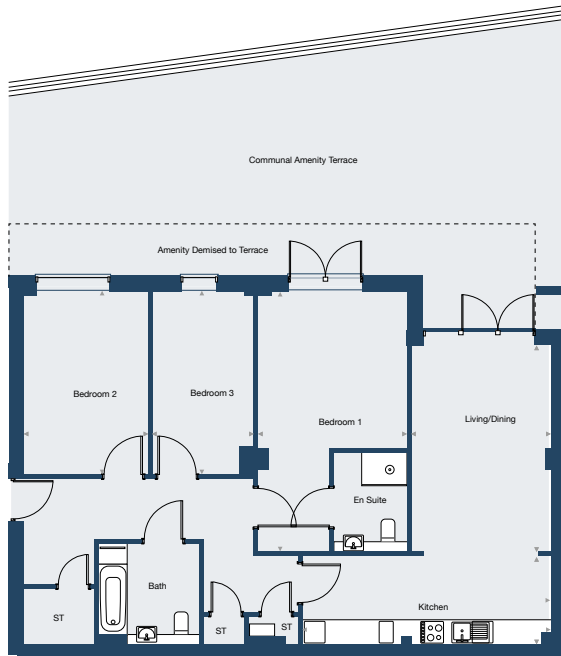
Total Internal Area 50.0 m<sup>2</sup>



# PLOT 104



Total Internal Area 104.3 m<sup>2</sup>



# PLOT 501



Total Internal Area 78.5 m<sup>2</sup>





Waterlea Collection, Hunts Wharf, Leaside Road, London, E5 9LU



For more information

[WWW.ISHA.CO.UK](http://WWW.ISHA.CO.UK) | 020 7704 7388  
[SALES@ISHA.CO.UK](mailto:SALES@ISHA.CO.UK)

These brief particulars have been prepared and are intended as convenient guide to supplement an inspection or survey and do not form, or form any part of any offer or contract. Their accuracy is not guaranteed. They contain statements of opinion and in some instances we have relied on information supplied by others. Design elements and specification details may change without further notice. You should verify the particulars on your visit to the property, and the particulars do not obviate the need for a full structural survey and all the appropriate enquiries. Accordingly, there shall be no liability as a result of any error or omission in the particulars or any information given. December 2019.