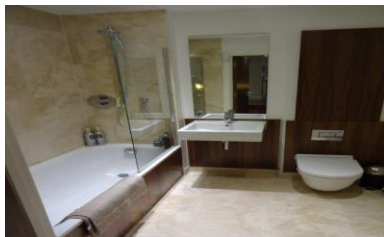




## 20 Regal Wharf, 58 De Beauvoir Crescent, London, N1 5TZ – 3-bedroom shared ownership apartment only £270,000



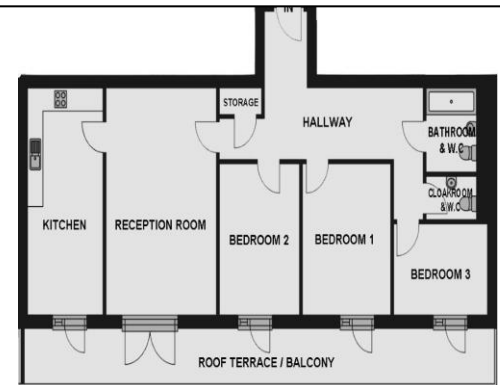
### 20 Regal Wharf, 58 De Beauvoir Crescent, London, N1

Full market value: £900,000  
**30% equity: £270,000**

Monthly rent: £925.99

Monthly service charge: £287.33

- Large 3 Bedroom Penthouse flat
- Separate reception and kitchen / diner area
- Underfloor central heating
- Fitted electric hob, oven, dishwasher and fridge-freezer
- South Facing Roof Terrace
- Bathroom and separate cloakroom
- Contemporary fittings to bathroom
- Private hallway
- Video entryphone system
- Gross Int floor space 104 sqm



To arrange a viewing appointment please register online at [www.isha.co.uk](http://www.isha.co.uk)  
**Viewing is strictly by appointment only**

These brief particulars are intended as guide to supplement an inspection or survey and do not form part of any offer or contract. Their accuracy cannot be guaranteed. They contain statements of opinion and in some instances we have relied upon information supplied by others. You should verify the particulars by visiting the property. These particulars do not obviate the need for a survey and all appropriate enquiries. Accordingly there shall be no liability as result of any error or omission in the particulars or any information given. All information believed to be correct at time of publication. August 2019