



**Flat 1 Bergman House, 200 Hoe Street, London, E17 4BS - 3-bedroom shared ownership apartment only £120,000**



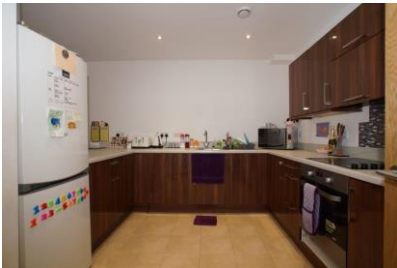
**Flat 1 Bergman House, 200 Hoe Street London E17 4BS**

Full market value: £480,00

**25 % equity: £120,000**

Monthly rent: £678.64

Monthly service charge: £267.12



- Open-plan kitchen area with breakfast bar adjoining the reception room
- Entrance Hallway T-shaped with built-in storage cupboards
- 3 Bedrooms, one with en-suite bathroom
- Family bathroom
- West-facing brick-paved terrace to the rear accessed from reception room
- Video entry phone system
- Fob accessed bike store
- Communal courtyard



To arrange a viewing appointment please register on line at [www.isha.co.uk](http://www.isha.co.uk)

**Viewing is strictly by appointment only**

These brief particulars are intended as guide to supplement an inspection or survey and do not form part of any offer or contract. Their accuracy cannot be guaranteed. They contain statements of opinion and in some instances we have relied upon information supplied by others. You should verify the particulars by visiting the property. These particulars do not obviate the need for a survey and all appropriate enquiries. Accordingly there shall be no liability as result of any error or omission in the particulars or any information given. All information believed to be correct at time of publication. July 2020