



Flat 10 Bergman House, 200 Hoe Street, Walthamstow, London, E17 4BS – 2 Bedroom shared ownership apartment only £162,750



Flat 10 Bergman House, 200 Hoe Street, Walthamstow, London, E17 4BS

Full market value: £465,000

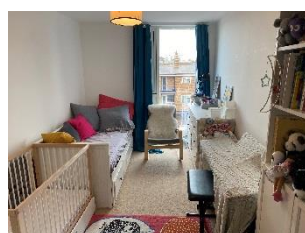
35% equity: £162,750

Monthly rent: £533.99pcm

Monthly service charge: £197.37pcm



- Third floor modern flat
- Reception room including open-plan kitchen area
- 2 bedrooms, one with en-suite bathroom
- Family bathroom
- Video entry phone system
- Private balcony with view across London
- Communal gardens
- Fob accessed bike store



To arrange a viewing appointment please register online at www.isha.co.uk - Viewing is strictly by appointment only

These brief particulars are intended as guide to supplement an inspection or survey and do not form part of any offer or contract. Their accuracy cannot be guaranteed. They contain statements of opinion and in some instances, we have relied upon information supplied by others. You should verify the particulars by visiting the property. These particulars do not obviate the need for a survey and all appropriate enquiries. Accordingly, there shall be no liability as result of any error or omission in the particulars or any information given. All information believed to be correct at time of publication October 2020.