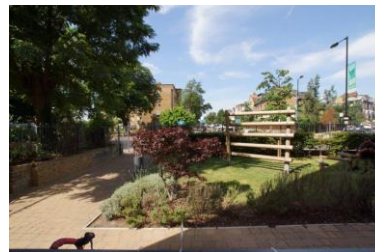
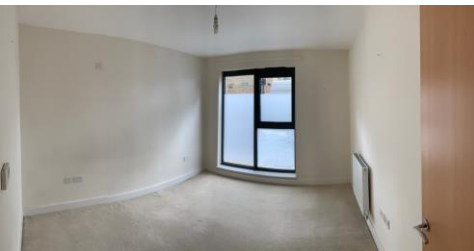




## Flat 2 Lake House, 2 Green Lanes Walk, Hackney, London, N4 2GE 2-bedroom shared ownership apartment only £191,000



### 2 Lake House, 2 Green Lanes Walk, London, N4 2GE

Full market value: £477,500

**40% equity: £191,000**

Monthly rent: £689.98

Monthly service charge: £137.77

- Ground floor flat of a six-storey apartment building
- 2-bedroom apartment
- Double glazed windows
- West-facing recessed terrace, which is accessed from the reception room
- Play area
- A variety of local shops, cafes and restaurants serve the area
- Finsbury Park, Clissold Park and Woodberry Wetlands nature reserve within easy walking distance
- Well connected with Manor House station a 5 minutes' walk away and Finsbury Park station is less than a 15 minutes' walk away.

To arrange a viewing appointment please register online at [www.isha.co.uk](http://www.isha.co.uk)  
**Viewing is strictly by appointment only**

These brief particulars are intended as guide to supplement an inspection or survey and do not form part of any offer or contract. Their accuracy cannot be guaranteed. They contain statements of opinion and in some instances we have relied upon information supplied by others. You should verify the particulars by visiting the property. These particulars do not obviate the need for a survey and all appropriate enquiries. Accordingly there shall be no liability as result of any error or omission in the particulars or any information given. All information believed to be correct at time of publication. July 2020