



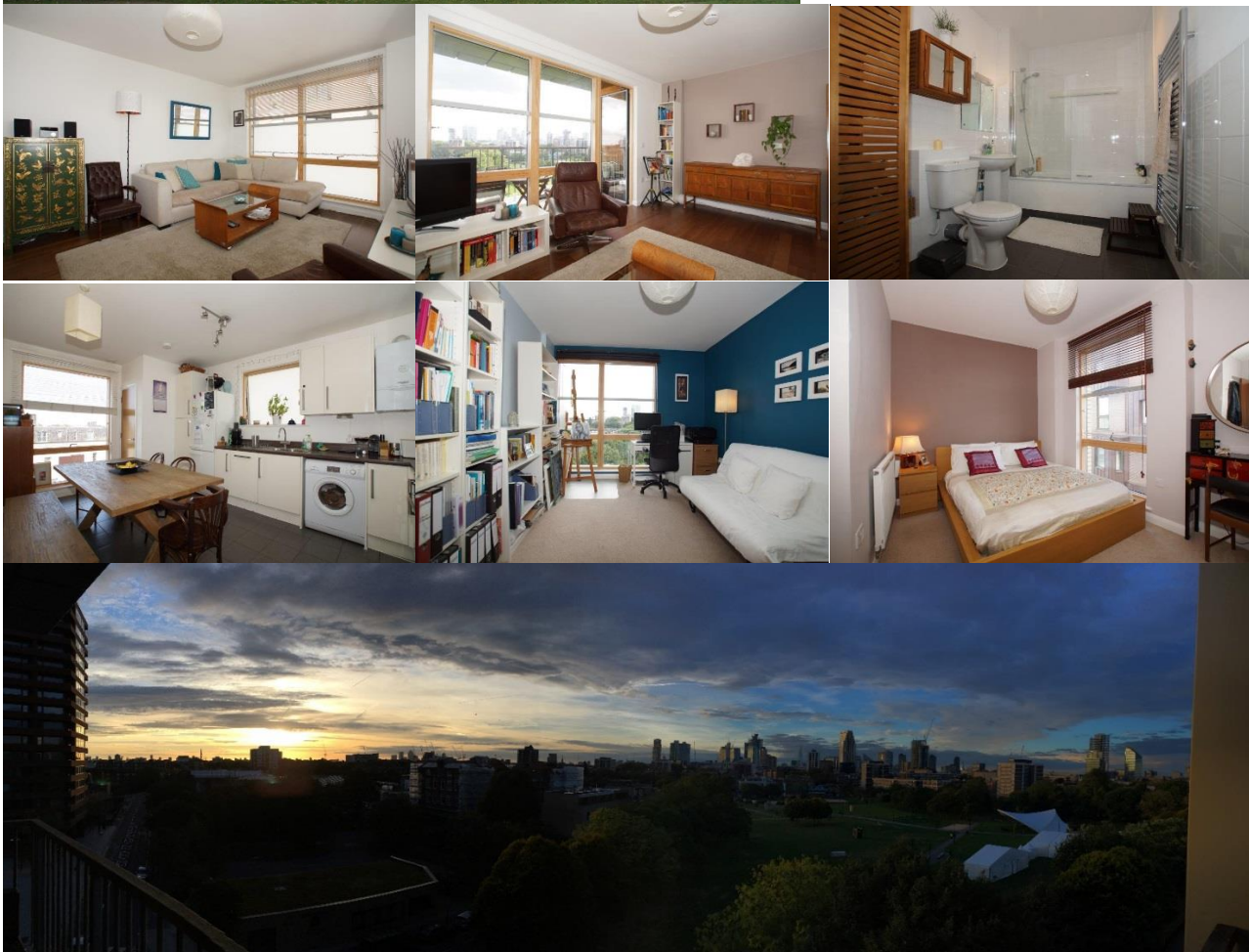
Burbage House – 2 Bedroom shared ownership apartment only £245,000



Burbage House, Poole Street, London N1 5ES

Full market value: £700,000
35% equity: £245,000

Monthly rent: £604.93
Monthly service charge: £205.64



Features include:

These brief particulars are intended as guide to supplement an inspection or survey and do not form part of any offer or contract. Their accuracy cannot be guaranteed. They contain statements of opinion and in some instances we have relied upon information supplied by others. You should verify the particulars by visiting the property. These particulars do not obviate the need for a survey and all appropriate enquiries. Accordingly there shall be no liability as result of any error or omission in the particulars or any information given. All information believed to be correct at time of publication. November 2018.

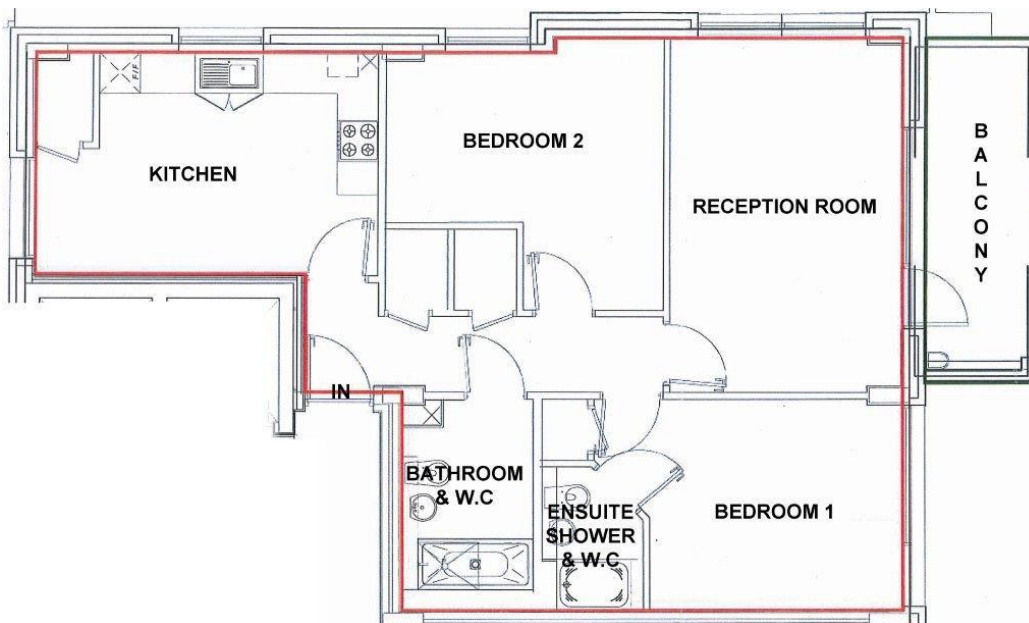


- Large Sixth Floor two bed apartment (approximately 82sqm)
- Private Hallway
- Reception Room
- Separate Kitchen
- Ensuite shower room and built in wardrobe to master bedroom
- Family bathroom
- Balcony with views
- Appliances including washer/dryer, dishwasher, fridge/freezer
- Fitted blinds
- Gas central heating (untested)
- Communal garden, cycle and bin store

The building is well located on the corner of Poole Street and Avebury Street overlooking the green open space of Shoreditch Park and close to the Regent's Canal.

The views from this sixth floor apartment are a real feature. Views south take in the spectacular urban skyline of the City and Docklands. Nearby Hoxton is a vibrant, cosmopolitan area, where you'll find an exciting mix of arts and entertainment. Local shopping and a street market is also available on Hoxton Street and the area has many restaurants, bars, cafés and clubs for you to enjoy.

Just over the road, Shoreditch Park offers sports pitches, tennis courts, a giant sculptured boulder for rock climbing and an outdoor beach volleyball court. There is an amphitheatre for music, theatre and cinema and the park is home to the annual Shoreditch Festival. The Regent's Canal towpath is also a perfect place for walking, cycling and jogging, and the nearby Britannia Leisure Centre offers you facilities that include a swimming pool, climbing wall, sports hall and gym.



These brief particulars are intended as guide to supplement an inspection or survey and do not form part of any offer or contract. Their accuracy cannot be guaranteed. They contain statements of opinion and in some instances we have relied upon information supplied by others. You should verify the particulars by visiting the property. These particulars do not obviate the need for a survey and all appropriate enquiries. Accordingly there shall be no liability as result of any error or omission in the particulars or any information given. All information believed to be correct at time of publication. November 2018.