



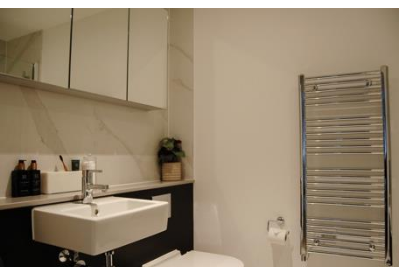
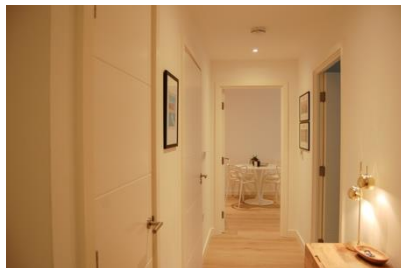
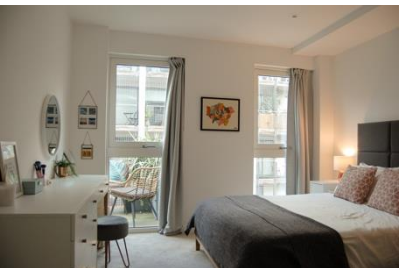
## Flat 9 Jefferson Court, 1 Cynthia Street, London, N1 9FU 1 bedroom shared ownership apartment only £175,000



### 9 Jefferson Court, 1 Cynthia Street, London, N1 9FU

Full market value: £700,000  
25% equity: £175,000

Monthly rent: £803.05  
Monthly service charge: £315.24



- Fourth floor, one bedroom flat
- Large double bedroom with inbuilt wardrobes
- Luxe bathroom with bath TV
- Large open plan kitchen/dining room
- East facing balcony off reception room
- Shared landscaped courtyard area
- Secure bike storage
- Gym
- Swimming pool
- Steam room/sauna/spa
- Private residents' cinema room
- 24-hour concierge
- Located near Regent's Canal in Islington, within walking distance of Angel and King's Cross stations, the property is extremely well connected.

To arrange a viewing appointment please register online at [www.isha.co.uk](http://www.isha.co.uk)

### Viewing is strictly by appointment only

These brief particulars are intended as guide to supplement an inspection or survey and do not form part of any offer or contract. Their accuracy cannot be guaranteed. They contain statements of opinion and in some instances we have relied upon information supplied by others. You should verify the particulars by visiting the property. These particulars do not obviate the need for a survey and all appropriate enquiries. Accordingly there shall be no liability as result of any error or omission in the particulars or any information given. All information believed to be correct at time of publication. December 2020