

Fire Risk Assessment

30-32 Trays Hill Close

Version 2

2 October 2023



Review Date: 2 October 2024

Score: Tolerable Risk

Assessor: Mark Thomas

Contents

1 Action Plan Summary	3
2 Introduction	4
3 Executive Summary	5
4 Premises Details	6
5 Fire Prevention	9
6 Escape Routes & Fire Spread	13
7 Detection & Warning	17
8 Firefighting	19
9 Lighting	21
10 Signs & Notices	22
11 Fire Safety Management	24
12 Tasks	26
13 Risk Score	28

Action Plan Summary

Task No.	Category	Sub Category	Action Required	Priority	Status	Action Taken	Date Completed
1	Fire Prevention	Housekeeping	Although the amount of combustibles currently in communal areas is not unreasonable, the premises should be monitored to ensure the amount of items does not build-up.	Advisory	Identified		
2	Escape Routes & Fire Spread	Construction and Glazing	There are glazed panels to the side of flat entrance doors. These are showing no acid itching to confirm whether this glazing is fire resisting. This should be confirmed.	Medium	Identified		
3	Signs & Notices	Other Signage	The current fire action notices are not suitable for a stay-put evacuation strategy. The notices should be replaced with ones which reflect the building's fire safety measures and explain the stay-put evacuation strategy.	High	Identified		
4	Fire Prevention	Lightning	The lightning protection should be periodically inspected by a competent person, to the frequency recommended in BS EN 62305.	Medium	Identified		

Introduction

This report presents the significant findings of a fire risk assessment carried-out at the premises by QFSM Ltd. The scope, format and limitations of the fire risk assessment have been discussed and agreed with the client.

The scope of the assessment does not include individual dwellings. Notwithstanding any statement or recommendation made with respect to smoke/heat alarms within dwellings, it is always recommended as best practice to ensure that working smoke alarms are provided in all dwellings at least to a BS 5839-6 Category LD3 standard. These should ideally be Grade D alarms (mains powered with integral battery back-up), although Grade F alarms (battery powered only) are a reasonable short term measure.

The report includes an action plan which contains recommended tasks, each with a suggested due date. These due dates are only our suggestions, and may or may not be appropriate, depending on individual circumstances such as financial constraints and requirements of enforcing authorities.

The premises risk score was assessed at the time of the fire risk assessment, and a recommended review date has been provided. The actual level of risk may change over time, as a result of tasks being completed, or new risks arising. Regardless of the review date, the fire risk assessment should be reviewed regularly so as to keep it up to date and particularly if:

- there is reason to suspect that the fire risk assessment is no longer valid; or
- there has been a significant change in the matters to which the fire risk assessment relates.

If you have any queries please contact QFSM Ltd at office@qfsm ltd.co.uk.

Executive Summary

The previous FRA for this building was reviewed prior to this inspection, paying particular attention to any tasks generated by that FRA. During this inspection these tasks were inspected where access was possible, to ascertain if the recommended remedial work had been completed, and comments regarding the progress of any remedial work made accordingly.

It was noted that there remains a number of tasks outstanding from the previous FRA which detail recommended remedial work required to ensure the safety of the building and that it is compliant with relative fire safety regulations and guidance. It is imperative that such remedial work is carried out within the recommended time frames given.

Due to current government guidelines regarding the current COVID-19 pandemic, access into flats to confirm the provision and standard of fire resisting flat entrance doors, or the provision and standard of fire alarms within flats was not possible. Inspection of flat entrance doors was made by external examination only, taking into account the age and condition of the doors, and where possible referring to previous FRAs where more detailed information regarding flat entrance doors and fire alarm provision may be found.

Records for the testing and maintenance of fire safety related systems are not kept on site. These are managed centrally and are held at the ISHA Head Office.

The wall, floors and stairs in the common areas are of masonry/concrete construction.

As expected, there is no common fire detection and alarm system, which supports the Stay Put strategy appropriate for the building.

The provided Fire Action Notice is incorrect and is one intended for a building with a simultaneous evacuation policy in place. This building has a stay-put evacuation policy and it is imperative that the correct Fire Action Notice is provided to ensure residents and visitors are aware of the action they should take in the event of a fire.

Giving consideration to the general fire safety arrangements within the building, and the tasks recommended as detailed within this report, it is assessed that this building presents a tolerable risk.

This new version was created on 02/10/2023 and is not a review of the fire risk assessment. This is purely an on-site audit carried out at the request of the client to ascertain the progress of any action carried out against previous tasks identified in previous versions of this fire risk assessment.

Premises Details

Address line 1

30-32 Trays Hill Close

Address line 2

Ashmount Road

Town

Islington

Postcode

N19 3FE

FRA Type

Type 1 - Common parts only (non-destructive)

Description

A Type 1 fire risk assessment has been conducted at this building. This means the inspection of the building has been non-destructive. As well as considering the arrangements for means of escape, the fire risk assessment has included, where possible, the examination of a sample of flat entrance doors. It has also considered, so far as reasonably practicable, the separating construction between the flats and the common parts without any intrusive examination of construction. This Type of fire risk assessment has not involved entry to flats beyond the area of the flat entrance door.

Client

ISHA

Building Information

Use	Purpose-built, self-contained flats
Number of floors - ground and above	3
Number of floors - below ground	0
Number of flats	3
Number of stair cores	1
Approach to flats	<ul style="list-style-type: none">• Direct from stair• Direct external access
Approximate period of construction	2010-2020
Is the top occupied storey over 18 metres above access level?	No

Construction details

A building of three floors of brick and mortar construction, containing three purpose-built self-contained flats.

Flat 32 has direct external access on the ground floor, flats 30 and 31 are duplex, occupying the first and second floors.

There is a single staircase which serves the first floor with flat entrance doors to flat 30 and 31 located.

Gas and electric meters are located in external cupboards immediately outside of the main entrance door.

Within the entrance hallway are located risers for water and electricity.

There are rear exits to small gardens, however these do not provide a route to ultimate safety.



Brick/mortar construction, with tiled facade on second floor



External walls rear elevation

External wall details

External walls are predominantly brick and mortar construction, with the exception of a section of tiled facade on the second floor.

Attention is drawn to the Ministry of Housing, Communities & Local Government Consolidated Advice Note for building owners of multi-storey, multi-occupied residential buildings, dated January 2020. The Advice Note recommends that building owners should consider the risk of external fire spread as part of the fire risk assessment for multi-occupied residential buildings. Consideration has been given to this matter within this fire risk assessment. The Advice Note further recommends the assessment of the fire risks of any external wall system, irrespective of the height of the building.

Are there any private balconies?

No

People

Are there any people especially at risk from fire?

Not Known

Fire Prevention

Electrical

Are electrical installations and appliances free from any obvious defect?

Yes

Are fixed installations periodically inspected and tested?

Yes

Are portable electrical appliances used?

No

Comments

Documentation regarding the testing and maintenance of fixed electrical installations is held centrally by ISHA. The Neighbourhood Officer has confirmed these are all up to date.

There are electrical sockets in the common areas, presumably for use by cleaning staff. These were in good condition and showed no evidence of misuse by residents or visitors.



Key isolated electrical sockets are provided.

Gas

Are gas installations and appliances free from any obvious defect?

Yes

Is gas equipment protected/located so as not to be prone to accidental damage?

Yes

Comments

Gas meters are located externally and not in any common areas.

Heating

Are fixed heating installations free from any obvious defect?

N/A

Are portable heaters used?

No

Comments

There is no heating provision in the common areas.

Cooking

Does cooking take place on the premises?

No

Comments

Cooking takes place within flats only and does not take place in the common parts.

Arson

Is security against arson reasonable?

Yes

Is there a reasonable absence of external fuels and ignition sources?

Yes

Comments

CCTV cameras are provided internally and externally. Whilst these cameras may have been installed for security purposes they also serve to reduce the risk of deliberate fire setting.

Access was gained into this building via a secured main entrance door (fob access).

The main entrance door was found to be locked and secure, preventing unauthorised access.



CCTV cameras are provided internally and externally

Housekeeping

Is accumulation of combustibles or waste avoided?

Yes

Are there appropriate storage facilities for combustible & hazardous materials?

N/A

Comments

Although the amount of combustibles currently in communal areas is not unreasonable, the premises should be monitored to ensure the amount of items does not build-up.

Building Works

Are there any hot works being carried-out at this time?

No

Are the premises free of any obvious signs of incorrect hot work procedures in the past?

Yes

Smoking

Are there suitable arrangements taken to prevent fires caused by smoking?

Yes

Comments

“No Smoking” signage is provided, and there is no evidence of smoking taking place in the common parts.



“No smoking” signage is provided

Dangerous Substances

Are dangerous substances present, or liable to be present?

No

Lightning

Is a lightning protection system installed?

Not Known

Comments

The Electricity at Work Regulations state that Lightning Protection systems should be serviced and maintained in accordance with the recommendations of BS EN 62305 at maximum intervals of twelve months. The system, including all lightning conductors and earth grounding installations, should be visually inspected and tested by a suitably qualified electrical engineer.



LPS

Escape Routes & Fire Spread

Ease of Use

Are exits easily and immediately openable?

Yes

Do fire exits open in direction of escape where necessary?

Yes

Are escape routes unobstructed and safe to use?

No

Are there reasonable measures for the evacuation of disabled people?

Yes

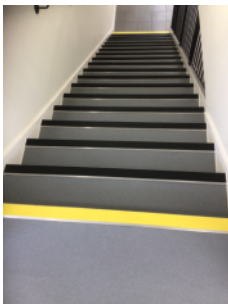
Comments

There is an emergency release device on the main entrance door to the ground floor lobby. This was checked to be working during the review and it is assumed that it fails safe to open in the event of a mains failure although this could not be checked.

Tenants are presumed to be a typical cross section of the public and could include visitors and contractors. It is assumed that all occupants and visitors are capable of using the means of escape unaided to reach a place of ultimate safety.

There are a small number of items located in the common areas, which whilst currently do not present a significant risk, these areas should be monitored to ensure they do not build up.

Stair nosings are of a contrasting colour to assist identification.



Stair nosings are conspicuous at change of levels

Dimensions

Are travel distances reasonable?

Yes

Is there sufficient exit capacity?

Yes

Fire Doors

Doors which are expected to be fire resisting:

- Flats
- Risers

Flat Doors

- Not confirmed

Riser Doors

- FD30S

Are fire doors to a suitable standard?

Yes

Is there suitable provision of self-closing devices?

Yes

Is there suitable provision of hold-open devices?

N/A

Are doors kept locked where appropriate?

Yes

Comments

Due to current government guidelines regarding the current COVID-19 pandemic, access into flats to confirm the provision and standard of fire resisting flat entrance doors was not possible. Inspection of flat entrance doors was made by external examination only, taking into account the age and condition of the doors, and where possible referring to previous FRAs where more detailed information regarding flat entrance doors and fire alarm provision may be found. All flat entrance doors appeared to be in good condition, with no obvious visible damage or defects and therefore it can reasonably assume they would afford the same level of fire resistance as found in the previous FRA.

It is understood that communal doors are inspected regularly by neighbourhood officers and formally recorded in the quarterly/6 monthly estate inspections with residents. Records are held with the neighbourhood officers. Flat entrance doors are inspected during the annual LGSR visits where the gas engineers record on their PDA if a door closer exists and intumescent strips and cold smoke seals exist.



Example of flat entrance door.

Construction & Glazing

Are escape routes protected with suitable walls and floors?

Yes

Is there adequate compartmentation?

No

Is there reasonable limitation of linings that might promote fire spread?

Yes

Glazing which is expected to be fire resisting, inc vision panels and fanlights:

- Flats

Flats Glazing

- Not confirmed

Is glazing reasonable and free from any obvious defects?

Yes

Comments

There are glazed panels to the side of flat entrance doors. These are showing no acid itching to confirm whether this glazing is fire resisting. This should be confirmed.



Glazed panels on flat entrance doors.

Dampers, Ducts & Chutes

Are there suitable measures to restrict fire spread via ducts and concealed spaces?

Yes

Comments

This was not an intrusive fire risk assessment however there were no Dampers, Ducts or Chutes evident.

Smoke Ventilation

Areas where smoke ventilation is expected:

- Staircases

Staircases

- Natural Vent - Automatic

Is smoke ventilation reasonable and free from any obvious defects?

Yes

Comments

A BS5839-1 Category L3 smoke detection system is provided for the purpose of the actuation of the window AOV. Manual smoke control devices are also provided for fire service use



Manual smoke control device.



Window AOV

Detection & Warning

Is an electrical fire alarm system expected?

No

Why not?

Purpose-built flats

Is a fire detection and/or alarm system provided?

Yes

Areas covered

- Communal areas

Communal Areas

System Category

- BS 5839 Pt1 Category L5

Cause & Effect

- Operates smoke ventilation

Control Equipment

Is the control equipment suitably located?

N/A

Is the control equipment free from any obvious fault or defect?

N/A

Manual Fire Alarms

Are there sufficient means of manually raising an alarm?

N/A

Are manual callpoints appropriately located and free from obvious defect?

N/A

Automatic Fire Detection

Is there sufficient provision of automatic fire detection?

N/A

Is the type of automatic fire detection suitable and free from obvious defect?

N/A

Comments

Due to current government guidelines regarding the current COVID-19 pandemic, access into flats to confirm the provision and standard of fire alarms within flats was not possible.

Audibility

Are there adequate means of alerting all relevant persons?

N/A

Firefighting

Fire Extinguishers

Are fire extinguishers expected?

No

Why not?

- Not practicable to train residents
- Fire unlikely in communal areas
- Vandalism concerns

Are fire extinguishers provided?

No

Is the provision of fire extinguishers reasonable?

Yes

Fixed Systems

Are any fixed systems provided?

No

Is provision of fixed systems reasonable?

Yes

Fire Service Facilities

Are any fire service facilities provided?

Yes

Types of facility

- Smoke ventilation
- Entrance door override

Is provision of fire service facilities reasonable?

Yes



Fire service override device tested and working correctly

Lighting

Normal Lighting

Is there adequate lighting of internal escape routes?

Yes

Is there adequate lighting of external escape routes?

Yes

Is there adequate lighting in risk critical areas?

Yes

Emergency Lighting

Method of emergency lighting of internal escape routes:

- Maintained emergency lighting (local)

Is this provision reasonable?

Yes

Method of emergency lighting of external escape routes:

- Maintained emergency lighting (local)

Is this provision reasonable?

Yes

Method of emergency lighting of other areas:

- Not applicable

Is this provision reasonable?

Yes

Comments

Although this inspection took place during daylight hours, given the provision of street lighting in the immediate vicinity and lighting provided by surrounding buildings, it is reasonable to assume there would be sufficient borrowed light to aid escape in these areas.



Maintained EL provided in common escape routes.

Signs & Notices

Escape Routes

Is escape route signage necessary?

No

Why not?

- Simple escape routes
- Routes in ordinary use

Is escape route signage provided?

Yes

Is provision of escape route signage suitable?

Yes

Fire Doors

Is there signage suitable for self-closing fire doors?

N/A

Is there signage suitable for locked fire doors?

Yes

Is there signage suitable for automatic fire doors?

N/A



“Fire door keep locked” signage on riser cupboard doors

Other Signs & Notices

Is there suitable signage for fire service facilities?

Yes

Are fire action notices suitable?

No

Are there suitable notices for fire extinguishers?

N/A

Is there suitable zone information for the fire alarm system?

N/A

Comments

The provided Fire Action Notice gives instruction and information for a simultaneous evacuation policy however, there is a stay-put policy in place in this building which is the appropriate strategy for a building of this type (purpose built, self contained flats of general needs occupancy)

It is imperative that the provided Fire Action Notice accurately reflects the policy in place and this Fire Action Notice should be removed and replaced with one which gives information and instruction to residents and visitors regarding the action to be taken in the event of a fire.

Fire Safety Management

Procedures & Arrangements

Current evacuation policy	Stay Put
Are fire action procedures suitable and appropriately documented?	Yes
Are there suitable arrangements for calling the fire service?	N/A
Is there a suitable fire assembly point?	N/A
Are there suitable arrangements for the evacuation of disabled people?	Yes

Comments

These are general needs flats and as such no specific occupancy risk is identified. Tenants are presumed to be a typical cross section of public and could include visitors and contractors. It is assumed that all occupants and visitors are capable of using the means of escape unaided to reach a place of ultimate safety.

Training & Drills

Are staff regularly on the premises?	No
Are employees from outside organisations given appropriate fire safety information?	No

Comments

Correct Fire Action notices should provide sufficient information to inform persons from outside organisations of the action to take in the event of a fire alarm actuation or discovering a fire.

A task has been generated within the signs and notices section of this report

Testing & Maintenance

Was testing & maintenance information available?	No
Are fire extinguishers subject to suitable test & maintenance?	N/A

Comments

Fire Safety documentation for the testing and maintenance of fire safety systems is held centrally at the ISHA Head Office. The ISHA Neighbourhood Officer has confirmed that these are up to date.

Record Keeping

Were fire safety records available?

No

Comments

Fire Safety documentation for the testing and maintenance of fire safety systems is held centrally at the ISHA Head Office. The ISHA Neighbourhood Officer has confirmed that these are up to date.

Tasks

Task 1

Source Version	1
Category	Fire Prevention
Sub Category	Housekeeping
Action Required	Although the amount of combustibles currently in communal areas is not unreasonable, the premises should be monitored to ensure the amount of items does not build-up.
Priority	Advisory
Status	Identified
Owner	Neighbourhood Services
Due Date	9 April 2023



Task 2

Source Version	1
Category	Escape Routes & Fire Spread
Sub Category	Construction and Glazing
Action Required	There are glazed panels to the side of flat entrance doors. These are showing no acid itching to confirm whether this glazing is fire resisting. This should be confirmed.
Priority	Medium
Status	Identified
Owner	Customer Homes
Due Date	8 October 2021



Task 3

Source Version	1
Category	Signs & Notices
Sub Category	Other Signage
Action Required	The current fire action notices are not suitable for a stay-put evacuation strategy. The notices should be replaced with ones which reflect the building's fire safety measures and explain the stay-put evacuation strategy.
Priority	High
Status	Identified
Owner	Neighbourhood Services
Due Date	8 July 2021



Task 4

Source Version	1
Category	Fire Prevention
Sub Category	Lightning
Action Required	The lightning protection should be periodically inspected by a competent person, to the frequency recommended in BS EN 62305.
Priority	Medium
Status	Identified
Owner	Neighbourhood Services
Due Date	8 October 2021

Risk Score

Risk Score

Tolerable Risk

Next Assessment Due

2 October 2024

Likelihood	Potential Consequence		
	Slight Harm	Moderate Harm	Extreme Harm
High	Moderate	Substantial	Intolerable
Medium	Tolerable	Moderate	Substantial
Low	Trivial	Tolerable	Moderate

Likelihood

Low Unusually low likelihood of fire as a result of negligible potential sources of ignition.

Medium Normal fire hazards (e.g. potential ignition sources) for this type of occupancy, with fire hazards generally subject to appropriate controls (other than minor shortcomings).

High Lack of adequate controls applied to one or more significant fire hazards, such as to result in significant increase in likelihood of fire.

Consequence

Slight Outbreak of fire unlikely to result in serious injury or death of any occupant (other than an occupant sleeping in a room in which a fire occurs).

Moderate Outbreak of fire could foreseeably result in injury (including serious injury) of one or more occupants, but it is unlikely to involve multiple fatalities.

Extreme Significant potential for serious injury or death of one or more occupants.