

Fire Risk Assessment

29 Tollington Way

Version 4

26 September 2024



Next Assessment Due: 30 September 2025

Risk Score: Tolerable Risk

Assessor: Jacob Troth

Contents

1 Action Plan Summary	3
2 Introduction	4
3 Executive Summary	5
4 Premises Details	6
5 Fire Prevention	8
6 Escape Routes & Fire Spread	11
7 Detection & Warning	15
8 Firefighting	17
9 Lighting	18
10 Signs & Notices	19
11 Fire Safety Management	20
12 Tasks	22
13 Risk Score	23

Action Plan Summary

Task No.	Category	Sub Category	Action Required	Priority	Status	Action Taken	Date Completed
1	Signs & Notices	Other Signage	<p>Provide fire action notices which confirm the action to take in the event of fire.</p> <p>12/10/2023 This task is outstanding.</p> <p>Version 4, 26/09/2024 This task remains outstanding.</p>	Medium	Identified		
2	Fire Prevention	Smoking	<p>No Smoking signage should be provided in the communal areas.</p> <p>12/10/2023 This task is outstanding.</p> <p>Version 4, 26/09/2024 This task remains outstanding.</p>	Medium	Identified		

Introduction

This report presents the findings of a fire risk assessment carried-out at the premises by QFSM Ltd. The scope, format and limitations of the fire risk assessment have been discussed and agreed with the client.

The scope of the assessment does not include individual dwellings. Notwithstanding any statement or recommendation made with respect to smoke/heat alarms within dwellings, it is always recommended as best practice to ensure that working smoke alarms are provided in all dwellings at least to a BS 5839-6 Category LD3 standard. These should ideally be Grade D1 alarms (mains powered with integral tamper proof battery back-up), although Grade F1 alarms (integral tamper proof battery powered only) are a reasonable short term measure.

The report includes an action plan which contains recommended tasks, each with a suggested due date. These due dates are only our suggestions, and may or may not be appropriate, depending on individual circumstances such as financial constraints and requirements of enforcing authorities.

The premises risk score was assessed at the time of the fire risk assessment, and a recommended review date has been provided. The actual level of risk may change over time, as a result of tasks being completed, or new risks arising. Regardless of the review date, the fire risk assessment should be reviewed regularly so as to keep it up to date and particularly if:

- there is reason to suspect that the fire risk assessment is no longer valid; or
- there has been a significant change in the matters to which the fire risk assessment relates.

If you have any queries please contact QFSM Ltd at office@qfsm ltd.co.uk.

Executive Summary

The previous FRA for this building was reviewed prior to this inspection, paying particular attention to any tasks generated by that FRA. During this inspection these tasks were inspected where access was possible, to ascertain if the recommended remedial work had been completed, and comments regarding the progress of any remedial work made accordingly.

This new version was created on 26/09/2024 and is not a review of the fire risk assessment. This is purely an on-site audit carried out at the request of the client to ascertain the progress of any action carried out against previous tasks identified in previous versions of this fire risk assessment.

There is no Fire Action Notice provided. It is imperative that residents and visitors are given clear instructions as to the action they should take in the event of a fire.

No Smoking signage should be provided in the communal areas.

Giving consideration to the general fire safety arrangements within the building, and the tasks recommended as detailed within this report, it is assessed that this building presents a tolerable risk.

Premises Details

Address line 1	29 Tollington Way
Town	Islington
Postcode	N7 6RG
FRA Type	Type 1 - Common parts only (non-destructive)
Description	A Type 1 fire risk assessment has been conducted at this building. This means the inspection of the building has been non-destructive. As well as considering the arrangements for means of escape, the fire risk assessment has included, where possible, the examination of a sample of flat entrance doors. It has also considered, so far as reasonably practicable, the separating construction between the flats and the common parts without any intrusive examination of construction. This Type of fire risk assessment has not involved entry to flats beyond the area of the flat entrance door.
Client	ISHA

Building Information

Use	Converted, self-contained flats
Number of floors - ground and above	4
Number of floors - below ground	0
Number of flats	2
Number of stair cores	1
Approach to flats	<ul style="list-style-type: none">Via protected lobbies / corridors

Approximate period of construction

Pre 1900

Is the top occupied storey over 18 metres above access level?

No

Construction details

This is a traditional brick-built period terraced four storey town house converted into two self-contained flats.



Brick and render front facade of the building

External wall details

Brick built and rendered facade.

Are there any private balconies?

No

People

Are there any people especially at risk from fire?

No

Fire Prevention

Electrical

Are electrical installations and appliances free from any obvious defect?

Yes

Are fixed installations periodically inspected and tested?

Not Known

Are portable electrical appliances used?

No

Comments

It is understood that fixed electrical installations are subject to a five yearly test in accordance with BS 7671. This has been confirmed by the ISHA Neighbourhood Officer but it was not possible to confirm when the electrical installation was last inspected.

Gas

Are gas installations and appliances free from any obvious defect?

N/A

Is gas equipment protected/located so as not to be prone to accidental damage?

N/A

Comments

Gas meters are located externally and not in any common areas.

Heating

Are fixed heating installations free from any obvious defect?

N/A

Are portable heaters used?

No

Comments

There is no heating provision in the common areas.

Cooking

Does cooking take place on the premises?

No

Comments

Cooking takes place within flats only and does not take place in the common parts.

Arson

Is security against arson reasonable?

Yes

Is there a reasonable absence of external fuels and ignition sources?

Yes

Comments

The main entrance door was found to be locked and secure, preventing unauthorised access.

Housekeeping

Is accumulation of combustibles or waste avoided?

Yes

Are there appropriate storage facilities for combustible & hazardous materials?

Yes

Comments

All common areas appeared clean, tidy and free of combustible items.



Common area clear of combustibles
and obstructions

Building Works

Are there any hot works being carried-out at this time?

No

Are the premises free of any obvious signs of incorrect hot work procedures in the past?

Yes

Comments

A scaffold has been erected on the front face of the building, however the nature of the works being carried out cannot be confirmed.



Scaffold erected on front face of the building

Smoking

Are there suitable arrangements taken to prevent fires caused by smoking?

No

Comments

"No Smoking" signage should be provided in the communal areas.

Dangerous Substances

Are dangerous substances present, or liable to be present?

No

Lightning

Is a lightning protection system installed?

No

Comments

A lightning protection system is not expected on a building of this height.

Escape Routes & Fire Spread

Ease of Use

Are exits easily and immediately openable?	Yes
Do fire exits open in direction of escape where necessary?	Yes
Are escape routes unobstructed and safe to use?	Yes
Are there reasonable measures for the evacuation of disabled people?	Yes

Comments

The provision of thumb turn devices on final exits means the doors can be opened without the use of a key.

No specific occupancy risk identified. Tenants are a typical cross section of public and would include visitors and contractors. It is assumed occupants are capable of using the means of escape, unaided to reach a place of ultimate safety.



Lever release mechanism

Dimensions

Are travel distances reasonable?	Yes
Is there sufficient exit capacity?	Yes

Fire Doors

Doors which are expected to be fire resisting:	<ul style="list-style-type: none">• Flats
Flat Doors	<ul style="list-style-type: none">• FD30 (notional)
Are fire doors to a suitable standard?	Yes
Is there suitable provision of self-closing devices?	Yes
Is there suitable provision of hold-open devices?	N/A
Are doors kept locked where appropriate?	N/A
Comments	
As part of this Fire Risk Assessment, access was gained into a sample flat to assess the suitability of flat entrance doors, and any internal doors which open onto the entrance hallway.	
Access was gained into flat A which has the original entrance door fitted which should provide a notional FD30 standard.	
The remaining flat front door could not be assessed due to access. However it does appear to be of the same age, condition and design and was probably installed at the same time. It is therefore reasonable to assume that they are of the same fire resisting standard.	



Flat A notional FD30 door



Notional FD30 fire door



FD30S construction enclosing electrical installation



Fire resisting enclosure around electrical installation

Construction & Glazing

Are escape routes protected with suitable walls and floors?

Yes

Is there adequate compartmentation?

Yes

Is there reasonable limitation of linings that might promote fire spread?

Yes

Glazing which is expected to be fire resisting, inc vision panels and fanlights:

• None

Is glazing reasonable and free from any obvious defects?

Yes



Construction within the electrical cupboard



Construction within electrical cupboard

Dampers, Ducts & Chutes

Are there suitable measures to restrict fire spread via ducts and concealed spaces?

Yes

Comments

No obvious breaches noted

Smoke Ventilation

Areas where smoke ventilation is expected:

• None

Is smoke ventilation reasonable and free from any obvious defects?

Yes

Detection & Warning

Is an electrical fire alarm system expected?

No

Why not?

Converted flats of stay-put standard

Is a fire detection and/or alarm system provided?

Yes

Areas covered

- Communal areas

Communal Areas

System Category

- BS 5839 Pt6 Grade D Category L3

Cause & Effect

- Sounds alarm in communal areas

Control Equipment

Is the control equipment suitably located?

N/A

Is the control equipment free from any obvious fault or defect?

N/A

Manual Fire Alarms

Are there sufficient means of manually raising an alarm?

N/A

Are manual callpoints appropriately located and free from obvious defect?

N/A

Automatic Fire Detection

Is there sufficient provision of automatic fire detection?

Yes

Is the type of automatic fire detection suitable and free from obvious defect?

Yes

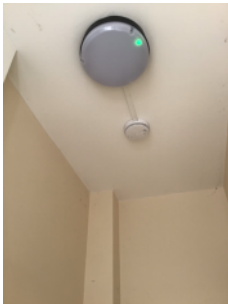
Comments

There is a BS5839-6 fire alarm provided in the common parts of this building. This may have been provided due to concerns over compartmentation within the building. No documentation regarding the cause and effect of the system was available and it cannot be confirmed whether the fire alarm in the common areas is interlinked to those installed within flats. The provision of a common fire alarm system contradicts National Guidance for a building of this type (converted flats of a stay put standard). It is recommended to carry out a full compartmentation survey to confirm if compartmentation throughout the building is adequate to support a stay put policy, and if it is, consider removing the common fire alarm and move to a stay put strategy. If there isn't adequate compartmentation to support a stay put policy and it is not considered practicable to carry out such remedial work as necessary to provide such a level of compartmentation then it may be necessary to continue to provide a common fire alarm. It should be noted that the current provision is not of a suitable Grade or coverage and should be upgraded to the recommendations of LACoRS guidance which is -

LACoRS Fire detection and alarm system recommendations; Three-or four-storey building converted into self-contained flats

A mixed system

- Grade A: LD2 coverage in the common areas and a heat alarm in each flat in the room/lobby opening onto the escape route (interlinked); and
 - Grade D: LD3 coverage in each flat (non-interlinked smoke alarm in the room/lobby opening onto the escape route) to protect the sleeping occupants of the flat
- (This is subject to the fire separation recommendations as given in LACoRS)



Part 6 smoke alarm in common hallway

Audibility

Are there adequate means of alerting all relevant persons?

Yes

Firefighting

Fire Extinguishers

Are fire extinguishers expected?

No

Why not?

- Not practicable to train residents
- Fire unlikely in communal areas
- Vandalism concerns

Are fire extinguishers provided?

No

Is the provision of fire extinguishers reasonable?

Yes

Fixed Systems

Are any fixed systems provided?

No

Is provision of fixed systems reasonable?

Yes

Fire Service Facilities

Are any fire service facilities provided?

No

Is provision of fire service facilities reasonable?

Yes

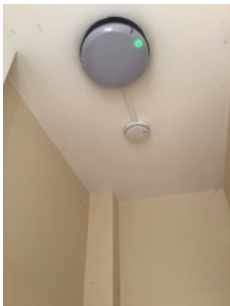
Lighting

Normal Lighting

Is there adequate lighting of internal escape routes?	Yes
Is there adequate lighting of external escape routes?	Yes
Is there adequate lighting in risk critical areas?	N/A

Emergency Lighting

Method of emergency lighting of internal escape routes:	<ul style="list-style-type: none">• Non-maintained emergency lighting (local)
Is this provision reasonable?	Yes
Method of emergency lighting of external escape routes:	<ul style="list-style-type: none">• Borrowed light
Is this provision reasonable?	Yes
Method of emergency lighting of other areas:	<ul style="list-style-type: none">• None
Is this provision reasonable?	Yes



Emergency lighting in hallway

Signs & Notices

Escape Routes

Is escape route signage necessary?

No

Why not?

- Simple escape routes
- Routes in ordinary use

Is escape route signage provided?

No

Is provision of escape route signage suitable?

Yes

Fire Doors

Is there signage suitable for self-closing fire doors?

N/A

Is there signage suitable for locked fire doors?

Yes

Is there signage suitable for automatic fire doors?

N/A

Other Signs & Notices

Is there suitable signage for fire service facilities?

N/A

Are fire action notices suitable?

No

Are there suitable notices for fire extinguishers?

N/A

Is there suitable zone information for the fire alarm system?

N/A

Comments

Fire Action notices are not displayed.

Fire Safety Management

Procedures & Arrangements

Current evacuation policy

Stay Put

Are fire action procedures suitable and appropriately documented?

Not Known

Are there suitable arrangements for calling the fire service?

Yes

Is there a suitable fire assembly point?

N/A

Are there suitable arrangements for the evacuation of disabled people?

Yes

Comments

These are general needs flats and as such no specific occupancy risk is identified. Tenants are presumed to be a typical cross section of public and could include visitors and contractors. It is assumed that all occupants and visitors are capable of using the means of escape unaided to reach a place of ultimate safety.

Training & Drills

Are staff regularly on the premises?

No

Are employees from outside organisations given appropriate fire safety information?

Yes

Comments

Fire Action notices provide sufficient information to inform persons from outside organisations of the action to take in the event of a fire alarm actuation or discovering a fire.

Testing & Maintenance

Was testing & maintenance information available?

No

Are fire extinguishers subject to suitable test & maintenance?

N/A

Comments

Fire Safety documentation for the testing and maintenance of fire safety systems is held centrally at the ISHA Head Office. The ISHA Neighbourhood Officer has confirmed that these are up to date.

Record Keeping

Were fire safety records available?

No

Comments

Fire Safety documentation for the testing and maintenance of fire safety systems is held centrally at the ISHA Head Office. The ISHA Neighbourhood Officer has confirmed that these are up to date.

Tasks

Task 1

Source Version	1
Category	Signs & Notices
Sub Category	Other Signage
Action Required	Provide fire action notices which confirm the action to take in the event of fire. 12/10/2023 This task is outstanding. Version 4, 26/09/2024 This task remains outstanding.
Priority	Medium
Status	Identified
Owner	Neighbourhood Services
Due Date	24 September 2020

Task 2

Source Version	2
Category	Fire Prevention
Sub Category	Smoking
Action Required	No Smoking signage should be provided in the communal areas. 12/10/2023 This task is outstanding. Version 4, 26/09/2024 This task remains outstanding.
Priority	Medium
Status	Identified
Owner	Neighbourhood Services
Due Date	06 September 2021

Risk Score

Risk Score	Tolerable Risk
Next Assessment Due	30 September 2025

Likelihood	Potential Consequence		
	Slight Harm	Moderate Harm	Extreme Harm
High	Moderate	Substantial	Intolerable
Medium	Tolerable	Moderate	Substantial
Low	Trivial	Tolerable	Moderate

Likelihood

Low	Unusually low likelihood of fire as a result of negligible potential sources of ignition.
Medium	Normal fire hazards (e.g. potential ignition sources) for this type of occupancy, with fire hazards generally subject to appropriate controls (other than minor shortcomings).
High	Lack of adequate controls applied to one or more significant fire hazards, such as to result in significant increase in likelihood of fire.

Consequence

Slight	Outbreak of fire unlikely to result in serious injury or death of any occupant (other than an occupant sleeping in a room in which a fire occurs).
Moderate	Outbreak of fire could foreseeably result in injury (including serious injury) of one or more occupants, but it is unlikely to involve multiple fatalities.
Extreme	Significant potential for serious injury or death of one or more occupants.