

BEAVER HOUSE 20/01/2025, 10:05

January inspections

Monday 20 January 2025

Prepared For Isha

25 Issues Identified



FRONT ENT

Assigned To Na

Good



INFO

Assigned To Na

Good



KEY SAFE WITH KEYS

Assigned To Na

Good



NOTICE BOARD (SALISBURY 9081 KEY)

Assigned To Na

Good



LIFT OPERATIONAL BUZZER NOR

Assigned To Apex

Raise so



FIRE EXIT SIGNS

Assigned To Na

Good



TOP FLOOR STORAGE

Assigned To Text 10 And 11

Text



TOP FLOOR STORAGE

Assigned To Text 11

Text



2ND FLOOR STORAGE NUMBER 8

Assigned To Text

Text



STORAGE ROOM 7

Assigned To Text

Text



STORAGE CUPBOARD 6

Assigned To Text

Text



DAMPNESS

Assigned To Mnm

Raise to surveyors



DAMPNESS

Assigned To Above

Above



CCTV GF

Assigned To Na

Good



REAR GARDEN

Assigned To Na

Good



STORE ROOM GARDEN FB01

Assigned To Fdh

Raise wo for light and handle plus tax letter to all tenants



EXT LIGHT WORKING

Assigned To Na

Good



REPAIR AND PAINT

Assigned To Mnm

Raise so



PUMP ROOM REAR GARDEN FB04

Assigned To Na

Good



REINFORCING REBAR AND POINTING BRICK

Assigned To Mnm

Raise so



MAJOR CRACKING

Assigned To Mnm

Raise so



TILE DEPRESSION

Assigned To Mnm

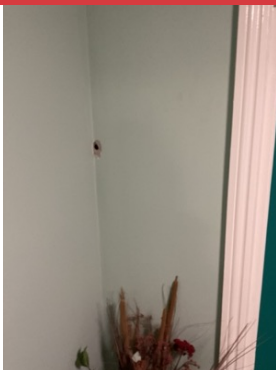
Raise so



INTERNAL LIGHTS

Assigned To Na

Good



HOLE -1 FLOOR

Assigned To Mnm

Raise so



BIN STORE

Assigned To Speak To Dion 11 Flats

Liaise with her