

# DELTA HOUSE N1 23/06/2025, 15:56

---

Quarterly Inspection.

Monday, 23 June 2025

33 Issues Identified



### **ISSUE 1 INTERNAL LIGHTING.**

Working on all landings.



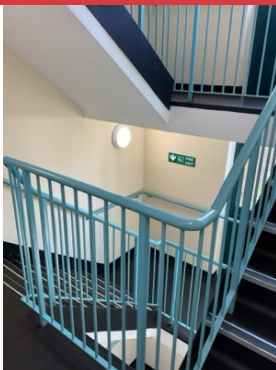
### **ISSUE 2 EXTERNAL LIGHTING.**

Working on all landings.



### **ISSUE 3 AOV.**

Tested, healthy.



### **ISSUE 4 FIRE SIGNAGE.**

In place all landings.



#### **ISSUE 5 INTERNAL DOORS.**

All healthy apart from 1 faulty door. See repairs.



#### **ISSUE 6 COMMUNAL OBSTRUCTION**

Assigned To Gary Johnson.

First floor. (Bike store full)



#### **ISSUE 7 COMMUNAL OBSTRUCTION.**

All other landings free from obstruction.



#### **ISSUE 8 LIFT, NILE ST ENTRANCE.**

Assigned To Apex

Lift in service lift phone did not go through to operator.



**ISSUE 9 LIFT PROVOST ST ENTRANCE.**

Out of service.



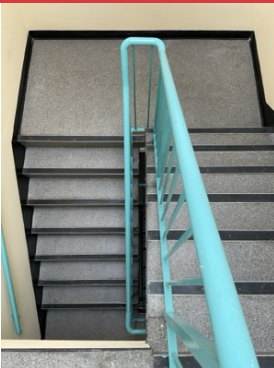
**ISSUE 10 MAIN STAIRWELL NILE ST ENTRANCE.**

Stair nosing and handrails all secure.



**ISSUE 11 MAIN STAIRWELL. PROVOST ST ENTRANCE.**

Stair nosing and handrails all secure.



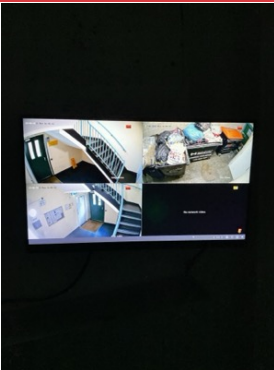
**ISSUE 12 FIRE ESCAPE STAIRWELL ROOF GARDEN TO CAR PARK.**

Stair nosing and handrails all secure.



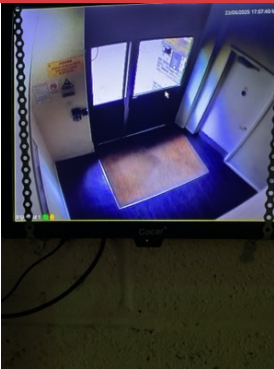
### **ISSUE 13 FIRE ESCAPE STAIRWELL FLAT 10 TO CAR PARK.**

Stair nosing and handrails all secure.



### **ISSUE 14 CCTV NILE ST ENTRANCE.**

Cameras all working. Date and time correct.



### **ISSUE 15 CCTV PROVOST ST ENTRANCE.**

Both cameras working. Date and time correct.



### **ISSUE 16 CCTV ROOF GARDEN**

Cameras all working. Date and time correct.



**ISSUE 17 CCTV NEAR FLAT 10.**

Cameras all working. Date and time correct.



**ISSUE 18 ELECTRICAL CUPBOARD NILE STREET ENTRANCE**

Secure, no issues.



**ISSUE 19 GAS METER CUPBOARD, NILE ST ENTRANCE.**

Secure, no issues.



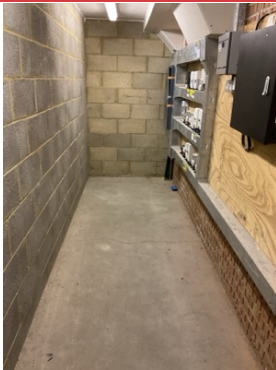
**ISSUE 20 ELECTRICAL CUPBOARD PROVOST ST ENTRANCE.**

Secure, no issues.



**ISSUE 21 GAS METER CUPBOARD PROVOST ST ENTRANCE.**

Secure no issues



**ISSUE 22 ELECTRICAL CUPBOARD NEAR FLAT 10**

Secure no issues.



**ISSUE 23 GAS METER CUPBOARD NEAR FLAT 10.**

Secure no issues.



**ISSUE 24 ELECTRICAL CUPBOARD BY CAR PARK GATES.**

Assigned To FDH.

Secure, faulty light.



### **ISSUE 25 GAS METER CUPBOARD NILE STREET.**

Assigned To Gary Johnson

Secure, needs sweeping.



### **ISSUE 26 NILE ST BIN ROOM**

Minor bulk, to leave until further notice.



### **ISSUE 27 REPAIRS.**

Assigned To MNM

No locks on door. Fire escape roof garden to car park. Second floor. WO 2588



### **ISSUE 28 REPAIRS**

Assigned To FDH

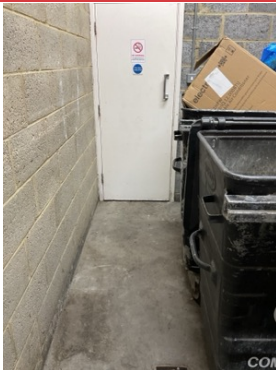
Faulty light, cupboard near flat 10. WO2589.



### **ISSUE 29 ROOF GARDEN**

Assigned To Accuro.

Bulk to be removed.



### **ISSUE 30 PROVOST ST BIN ROOM**

Free from bulk waste.



### **ISSUE 31 CAR PARK GATES.**

Safety sensors working.



### **ISSUE 32 CLEANING**

No concerns



**ISSUE 33 GROUNDS MAINTENANCE.**

No concerns