

KINVER HOUSE 09/01/2025, 16:10

January inspection

Thursday 9 January 2025

Prepared For Isha

36 Issues Identified



ISSUE 1



ISSUE 2



ISSUE 3



ISSUE 4



ISSUE 5



CODE 0012 LEFT OF ALL KEY SAFES

Assigned To Na

Good



ISSUE 7



ISSUE 8



ISSUE 9



ISSUE 10



ISSUE 11



ISSUE 12



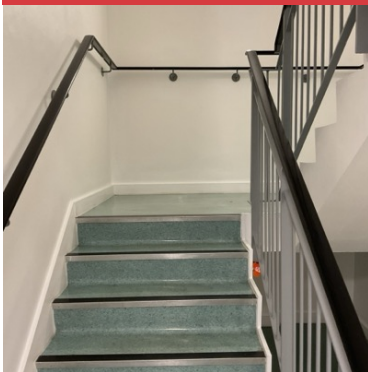
ISSUE 13



ISSUE 14



ISSUE 15



ISSUE 16



STAIRWELL DOOR NEXT TO LIFT 1ST FLOOR NOT CLOSING

Assigned To Delta

Raise wo (whole door needs replacing - wait)



CRACKED FIRE DOOR

Assigned To Mnm/ Fdh

Get Quotes rep-044606 Fdh and rep-044607mnm



AS ABOVE

Assigned To As Above

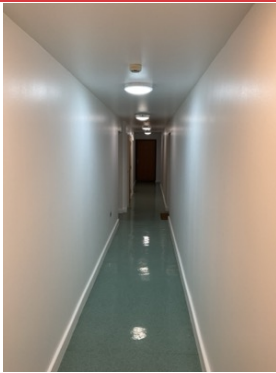
As above



AS ABOVE

Assigned To As Above

As above



1ST FLOOR LIGHTS

Assigned To Na

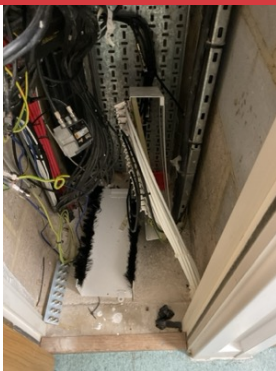
Good



FB02 KEY LOCK CHANGE 2ND FLOOR

Assigned To Delta

Raise wo rep-044602



ELECTRICAL CABLES BETTER ARRANGEMENT 3RD FLOOR

Assigned To Fdh

Raise wo rep-044597



AS ABOVE

Assigned To As Above

As above



3RD FLOOR ITEMS

Assigned To Ask Magda

Ask Magda



ISSUE 26



ISSUE 27



1ST FLOOR RUBBER PIECE MISSING

Assigned To Mnm

Raise wo



LOOK FOR THIS KEY IN POUCH

Assigned To Myself

Myself



BIN STORE

Assigned To Na

Good



ISSUE 31



GAS DOOR OPEN

Assigned To Na

Na



LIGHT DEFECTIVE

Assigned To Fdh

Raise wo rep-044597



GAS METERS IN BIN ROOM

Assigned To Na

Good



GAS DOOR IN BIN SHED DOES NOT CLOSE FB01 KEY

Assigned To Delta

Raise wo rep-44602



CHANGE TO FB01 KEY NOT WORKING

Assigned To Delta

Raise wo rep-44602